

Double eccentric, double flanged, integral seat and gearbox with handwheel
Face to face dimension to BS EN 558-1: 1996 long pattern (DIN 3202 - F4), (BS EN Series 14)
Flanges and drilling to ISO 7005-2 (EN 1092-2: 1997, DIN 2501)

Use:

For water and neutral liquids to max. 70°C

Tests:

Hydraulic test to EN 593 (EN 12266-1-2:)

Disc: 1.1 x PN
 Body: 1.5 x PN
 Function test: 1 x open/close

Actuation:

Wormgear, with handwheel
 Electric actuator
 Extension spindle
 Post indicator

On request
 Wall post indicator / Headstock /
 Brackets

Approvals:

DVGW (DN 200-600)
 EPDM rubber NF (DN 200-600)
 EPDM WRC (DN 700-1200)
 EPDM W270

Materials:

Body, disc	Ductile iron, min. GGG-40, to DIN 1693 (BS EN 1563: 1997 grade EN-GJS-400-7/10)
Seal retaining ring	Stainless steel DIN W 1.4021 AISI 420
Coating	External: Electrostatically applied epoxy resin to DIN 30677 (DN 200-600 GSK approved) Internal*: Electrostatically applied epoxy resin to DIN 30677 (DN 200-600 GSK approved)
Shaft	Stainless steel DIN W. no. 1.4057
Sealing (DN 200-600)	EPDM rubber (NF standard)
Sealing (DN 700-1200)	EPDM rubber (WRC standard)
O-ring	NBR rubber
Bearing, bushes	Aluminium bronze to DIN 1714, BS 1400
Thrust plate, spacer	Dezincification resistant brass, CZ 132 to BS 2872
End cover	Steel, DIN W. no. 1.0161
Screws, keys	Stainless steel A2

Gearbox*:**

Housing	GGG
Spindle	AISI 303
Coating	Black primer
Isolation	Class IP65**

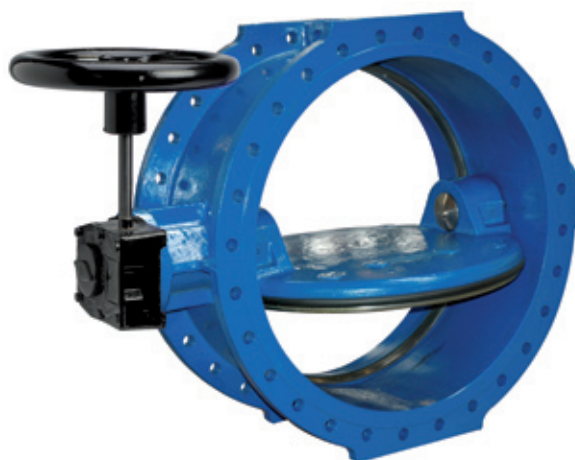
* Enamel to DIN 3475 on request (DN 200-600).

** Optional IP68 or ISO flange gear

***Gearbox not GSK approved



DN 200-600



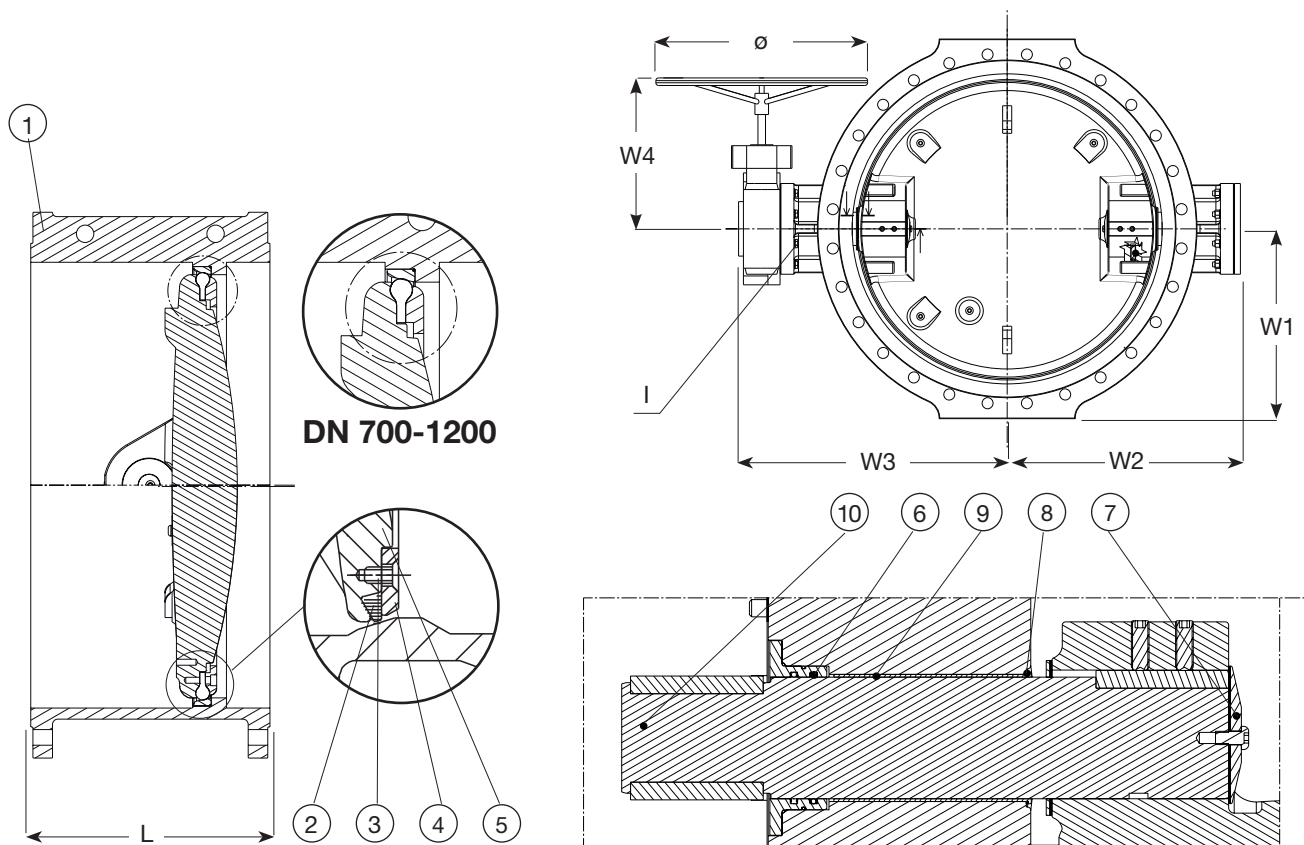
DN 700-1200



Double eccentric, double flanged, integral seat and gearbox with handwheel
 Face to face dimension to BS EN 558-1: 1996 long pattern (DIN 3202 - F4), (BS EN Series 14)
 Flanges and drilling to ISO 7005-2 (EN 1092-2: 1997, DIN 2501)

Component list

- | | | | |
|----------------------|------------------------|-----------------|-----------------|
| 1. Body | 4. Seal retaining ring | 7. End cover | 10. Valve shaft |
| 2. Sealing | 5. Disc | 8. Gasket | |
| 3. Countersunk screw | 6. O-ring | 9. Head bearing | |



Ref. nos.	DN	W2 mm	W1 mm	W3 mm	W4 mm	L mm	Theoretic ISO 5210		Handwheel ø mm	Weight kilos
							F10	PN		
756-0200-106	200	200	182	279	277	230	F10	10	ø 250	40
756-0200-116	200	200	182	279	277	230	F10	16	ø 250	40
756-0250-106	250	234	215	313	277	250	F10	10	ø 250	58
756-0250-116	250	234	215	313	277	250	F10	16	ø 250	58
756-0300-106	300	264	242	347	306	270	F12	10	ø 400	83
756-0300-116	300	264	242	347	306	270	F12	16	ø 400	83
756-0350-106	350	290	272	372	306	290	F12	10	ø 400	110
756-0350-116	350	290	272	372	306	290	F12	16	ø 400	110
756-0400-106	400	321	302	403	306	310	F12	10	ø 400	142
756-0400-116	400	321	302	403	306	310	F12	16	ø 400	142
756-0450-106	450	358	332	449	416	330	F14	10	ø 500	184
756-0450-116	450	358	332	449	416	330	F14	16	ø 500	184
756-0500-106	500	395	371	486	416	350	F14	10	ø 500	240
756-0500-116	500	395	371	486	416	350	F14	16	ø 500	240
756-0600-106	600	467	435	578	457	390	F16	10	ø 600	410
756-0600-116	600	467	435	578	457	390	F16	16	ø 600	410
756-0700-104	700	550	455	641	449	430	F25	10	ø 700	535
756-0700-114	700	550	455	641	449	430	F25	16	ø 700	535
756-0800-104	800	620	513	711	449	470	F25	10	ø 700	687
756-0800-114	800	620	513	711	449	470	F25	16	ø 700	687
756-0900-104	900	690	563	791	499	510	F25	10	ø 700	971
756-0900-114	900	690	563	811	499	510	F25	16	ø 700	971
756-1000-104	1000	770	628	871	499	550	F25	10	ø 700	1262
756-1000-114	1000	770	628	871	499	550	F25	16	ø 700	1262
756-1200-104	1200	855	743	981	581	630	F30	10	ø 700	1953
756-1200-114	1200	855	743	1009	581	630	F30	16	ø 700	1953

DN 1300-2200 on request. * For flange drilling information please refer to "Technical information".