

Double eccentric, double flanged, integral seat and free shaft
Face to face dimension to BS EN 558-1: 1996 long pattern (DIN 3202 - F4), (BS EN Series 14)
Flanges and drilling to ISO 7005-2 (EN 1092-2: 1997, DIN 2501)

Use:

For water and neutral liquids to max. 70°C

Tests:

Hydraulic test to EN 593 (EN 12266-1-2:)

Disc: 1.1 x PN
 Body: 1.5 x PN
 Function test: 1 x open/close

Actuation:

Wormgear, with handwheel
 Electric actuator
 Extension spindle
 Post indicator

On request
 Wall post indicator / Headstock /
 Brackets

Approvals:

DVGW (DN 200-600)
 EPDM rubber NF (DN 200-600)
 EPDM WRC (DN 700-1200)
 EPDM W270

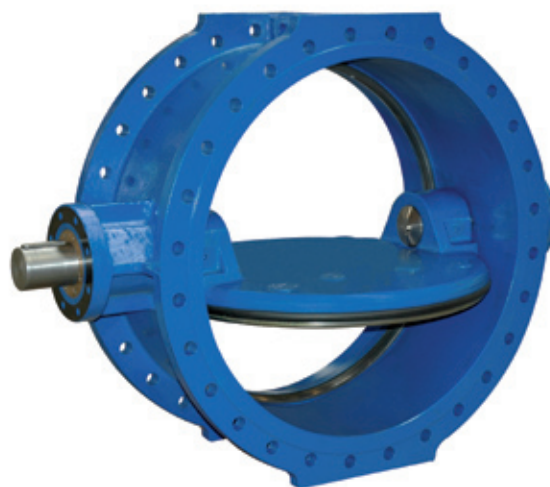
Materials:

| | |
|-----------------------|---|
| Body, disc | Ductile iron, min. GGG-40, to DIN 1693 (BS EN 1563: 1997 grade EN-GJS-400-7/10) |
| Seal retaining ring | Stainless steel DIN W 1.4021 AISI 420 |
| Coating | External: Electrostatically applied epoxy resin to DIN 30677 (DN 200-600 GSK approved) Internal*: Electrostatically applied epoxy resin to DIN 30677 (DN 200-600 GSK approved) |
| Shaft | Stainless steel DIN W. no. 1.4057 |
| Sealing (DN 200-600) | EPDM rubber (NF standard) |
| Sealing (DN 700-1200) | EPDM rubber (WRC standard) |
| O-ring | NBR rubber |
| Bearing, bushes | Aluminium bronze to DIN 1714, BS 1400 |
| Thrust plate, spacer | Dezincification resistant brass, CZ 132 to BS 2872 |
| End cover | Steel, DIN W. no. 1.0161 |
| Screws, keys | Stainless steel A2 |

* Enamel to DIN 3475 on request (DN 200-600).



DN 200-600



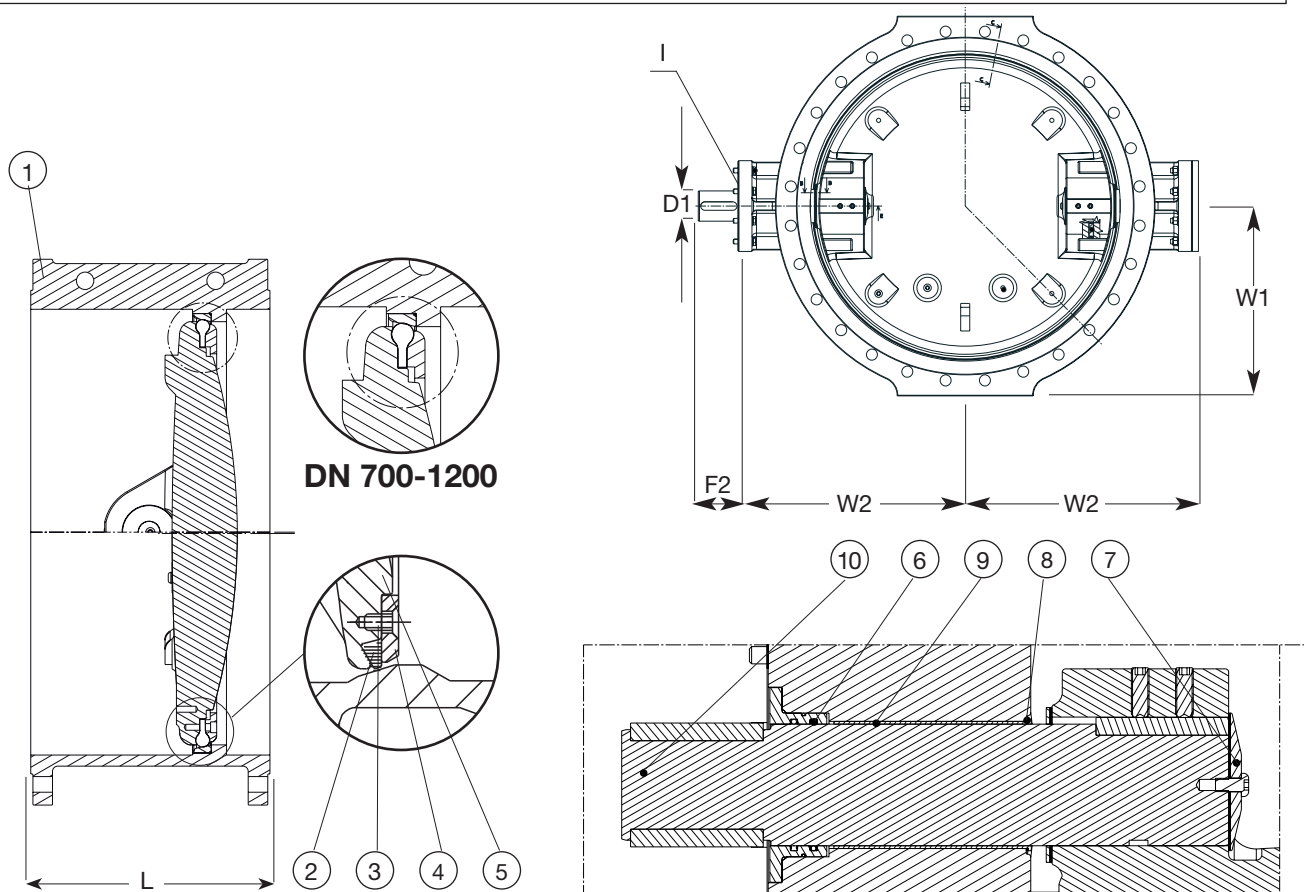
DN 700-1200



Double eccentric, double flanged, integral seat and free shaft
 Face to face dimension to BS EN 558-1: 1996 long pattern (DIN 3202 - F4), (BS EN Series 14)
 Flanges and drilling to ISO 7005-2 (EN 1092-2: 1997, DIN 2501)

Component list

- | | | | |
|----------------------|------------------------|-----------------|-----------------|
| 1. Body | 4. Seal retaining ring | 7. End cover | 10. Valve shaft |
| 2. Sealing | 5. Disc | 8. Gasket | |
| 3. Countersunk screw | 6. O-ring | 9. Head bearing | |



| Ref. nos. | DN | W2 mm | W1 mm | F2 mm | L mm | D1 mm | ISO 5210 | PN | Theoretic weight kilos |
|-----------------|------|-------|-------|-------|------|-------|----------|----|------------------------|
| 756-0200-106008 | 200 | 200 | 182 | 50 | 230 | ø25 | F10 | 10 | 40 |
| 756-0200-116008 | 200 | 200 | 182 | 50 | 230 | ø25 | F10 | 16 | 40 |
| 756-0250-106008 | 250 | 234 | 215 | 50 | 250 | ø25 | F10 | 10 | 58 |
| 756-0250-116008 | 250 | 234 | 215 | 50 | 250 | ø25 | F10 | 16 | 58 |
| 756-0300-106008 | 300 | 264 | 242 | 66 | 270 | ø35 | F12 | 10 | 83 |
| 756-0300-116008 | 300 | 264 | 242 | 66 | 270 | ø35 | F12 | 16 | 83 |
| 756-0350-106008 | 350 | 290 | 272 | 66 | 290 | ø35 | F12 | 10 | 110 |
| 756-0350-116008 | 350 | 290 | 272 | 66 | 290 | ø35 | F12 | 16 | 110 |
| 756-0400-106008 | 400 | 321 | 302 | 66 | 310 | ø35 | F12 | 10 | 142 |
| 756-0400-116008 | 400 | 321 | 302 | 66 | 310 | ø35 | F12 | 16 | 142 |
| 756-0450-106008 | 450 | 358 | 332 | 75 | 330 | ø45 | F14 | 10 | 184 |
| 756-0450-116008 | 450 | 358 | 332 | 75 | 330 | ø45 | F14 | 16 | 184 |
| 756-0500-106008 | 500 | 395 | 370 | 75 | 350 | ø45 | F14 | 10 | 240 |
| 756-0500-116008 | 500 | 395 | 370 | 75 | 350 | ø45 | F14 | 16 | 240 |
| 756-0600-106008 | 600 | 467 | 435 | 82 | 390 | ø50 | F16 | 10 | 410 |
| 756-0600-116008 | 600 | 467 | 435 | 82 | 390 | ø50 | F16 | 16 | 410 |
| 756-0700-104008 | 700 | 530 | 455 | 100 | 430 | ø80 | F25 | 10 | 535 |
| 756-0700-114008 | 700 | 530 | 455 | 100 | 430 | ø80 | F25 | 16 | 535 |
| 756-0800-104008 | 800 | 600 | 513 | 100 | 470 | ø80 | F25 | 10 | 687 |
| 756-0800-114008 | 800 | 600 | 513 | 100 | 470 | ø80 | F25 | 16 | 687 |
| 756-0900-104008 | 900 | 670 | 563 | 100 | 510 | ø100 | F25 | 10 | 971 |
| 756-0900-114008 | 900 | 670 | 563 | 100 | 510 | ø100 | F25 | 16 | 971 |
| 756-1000-104008 | 1000 | 750 | 628 | 120 | 550 | ø100 | F25 | 10 | 1262 |
| 756-1000-114008 | 1000 | 750 | 628 | 120 | 550 | ø100 | F25 | 16 | 1262 |
| 756-1200-104008 | 1200 | 835 | 743 | 120 | 630 | ø100 | F30 | 10 | 1953 |
| 756-1200-114008 | 1200 | 835 | 743 | 150 | 630 | ø130 | F30 | 16 | 1953 |

DN 1300-2200 on request. * For flange drilling information please refer to "Technical information".